



## NAME: MV "ATLANTIC RUNNER II"

**Type:** Multi-Purpose Dry Cargo Ship, Equipped for Carriage of Containers,  
**Registered Owners:** BERLUTI SHIPTRADE CORP. MARSHALL ISLANDS  
**Time Charter Owners :** 2K Shipping and Trading JSC - Istanbul  
**Technical Operator:** MARLOW SHIP MANAGEMENT DEUTSCHLAND GMBH & CO. KG  
**Hull & Machinery:** Dohle Assekuranzkontor; P&I: Steamship Mutual

**Flag:** Marshall Islands  
**Port of Registry:** Majuro  
**IMO- No.:** 9509619  
**Call Sign:** V7A5739

**CLASS:** DNV  
**Yard:** Zhejiang Ouhua Shipyard China  
**Built:** 2010

### VESSEL DIMENSIONS:

LOA	179.50 m
LBP	169.00 m
Beam	28.00 m
Depth	15.10 m
Draft summer, <i>freeboard</i>	10.80 m
Draft design	10.00 m

### DEADWEIGHT:

Summer	33271 mts on draft 10.8 m
Winter	32255 mts on draft 10.6 m
Tropical	34291 mts on draft 11.1 m
Fresh	34364 mts on draft 11.1 m

Tonnage Int.	22.863 GT / 10.602 NT
Tonnage Suez	23.356,82 GT / 21.969,70 NT
Tonnage Panama	19.050,00 NT
Lightship	10285,3 t

Container capacity:	20 FT/40 FT
Deck:	484/218
Hold:	674/327
Total:	1158/545

Vessel's container intake is always subject to vessel's stability / trim / deadweight / permissible stack weights / Lashing forces and subject to regulations of visibility.

## CARGO VOLUME:

39,042 cbm (without Tween Decks)  
36,522 cbm (with Tween Decks)

## MAIN ENGINE:

Licencor MAN B&W, Copenhagen  
Licensee/Maker STX, Korea  
Type 1 x 6S50 MC-C7  
Output MCR 8.800 KW

## DIESEL GENERATORS:

Maker MAN B&W  
Type 2 x 6L 16/24  
Output 1 x 502 kWel at 1.000 rpm 50 hz  
Type 1 x 5L 16/24  
Output 1 x 418 kWel at 1.000 rpm 50 hz

## CRANES:

Maker MacGregor-Hdgglunds  
Number + Type 4 electro hydraulic  
*single deck crane* SWL 60 mts  
Outreach SWL 60mts - 20 mtrs  
Outreach SWL 50mts - 24 mtrs  
Outreach SWL 40mts - 30 mtrs

Combinable above hatch 2/3/4 to 110 mts by means of a traverse beam location center, with offset to port side. In case cranes are working constantly for 24 hours owners have the option to carry out maintenance work thereafter.

## CARGO HOLDS:

Hold	Cubic w/o TWD	Cubic with TWD in lower position	Hatchsize ( L X B )
1	3.294	3.242	12.6 m X 20.04 m / 10.2 m
2	10.765	9.733	25.6 m X 24.4 m
3	10.765	9.733	25.6 m X 24.4 m
4	10.765	9.733	25.6 m X 24.4 m
5	4.248	4.155	12.8 m X 24.4 m
Total : 39.837		36.609	

## TANKTOP SIZES:

	Tweendeck in holds 2/3/4	Bottom Sizes ( L X B )
Hold 1	227 sqm	7.8/6.9 m X 20.1 m/10.2 m
Hold 2	742 sqm	30.4 m X 24.4 m
Hold 3	742 sqm	30.4 m X 24.4 m
Hold 4	742 sqm	30.4 m X 24.4 m
Hold 5	197 sqm + 135 sqm (monkey rocks)	13.6 m X 14.5 m (24.4 m)

Total : 2,650 sqm + 135 sqm ( MR ) / 2,785 sqm tank

Clear height in hold : 14,85 meters

**Tanktop strength** 20 mts/sqm  
Except on monkey rocks in hold 5  
Where it is 12 mts/sqm and 4 mts/sqm on racks  
when they are stored in hold 5  
Containers stack weight: 20'/40' - 150mts/150mts.

**Hatch covers** Hydraulic folding type hatchcovers covers  
always one panel folding upright forward and  
aft Hatch Cover Sizes (L x B)

Hold 1	206	sqm	6.9/6.1 m x 20.5/10.6 m
Hold 2-4	2.067	sqm	29.1 m x 26.5 m (each)
Hold 5	352	sqm	13.3 m x 26.5 m
Total:	2.625	sqm	

**Fixed container fittings** 60 mts per 20ft stack on hatches 2-5 /  
**flush type container** 28 mts on hatch 1  
**stack weights:** 90 mts per 40ft stack on hatches 2-5 /  
56 mts on hatch 1  
70 mts per 20ft stack on deck in front of wheelhouse

**Hatch cover strength:** 4 mts/sqm

## TWEENDECK:

**Tweendeck container**  
**stack weights:** 20'/40' - 30mts/30mts  
20'/40' - 30mts/30mts

**Tweendeck strength** Tweendeck in holds 2/3/4

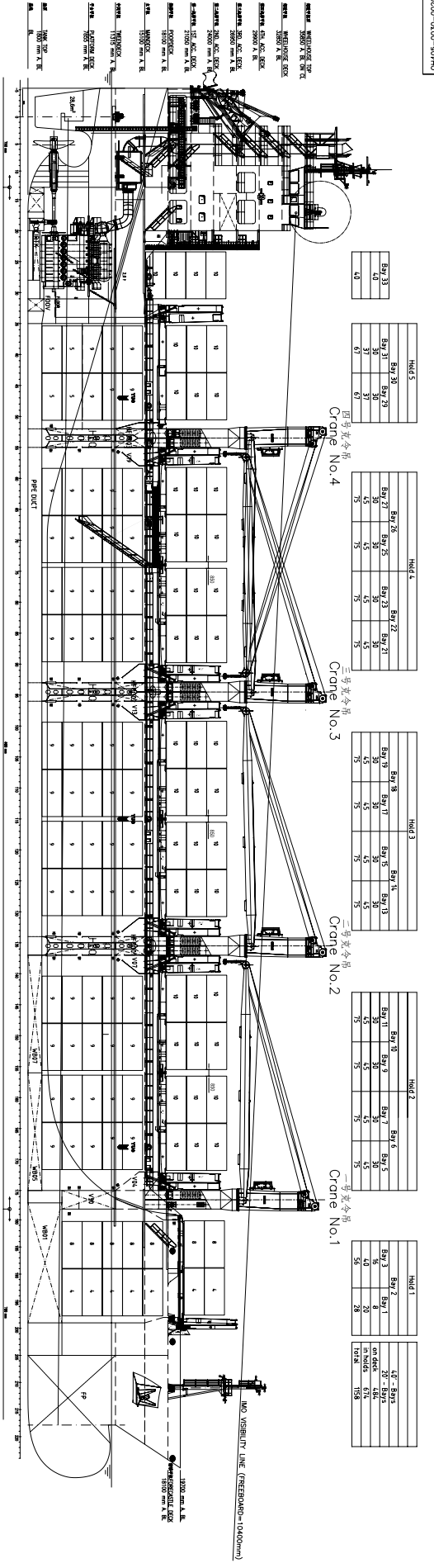
**Tweendeck height** 4 mts/sqm

**Tween deck Principle** 2 times , 2 layers or 3 layers of 8'6' containers  
TD panels outside and aft resting on titable foundations  
at side wall TD panels inside (at cl) resting on movable  
supporting racks. One, two, three or all five TD panels  
continuously laid out from aft to fwd.  
a. m. TD panels laid out one or both sides  
TD supporting racks to be free of horizontal lashing  
and cargo forces. Holds equipped with lashing eyes  
to assist in withdrawing cargo from racks

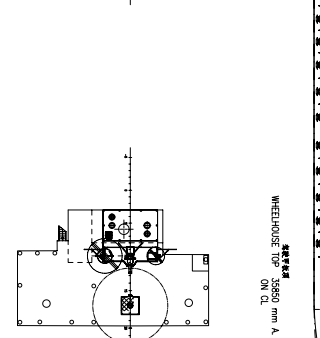
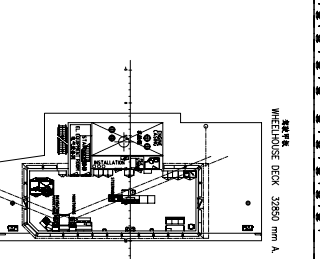
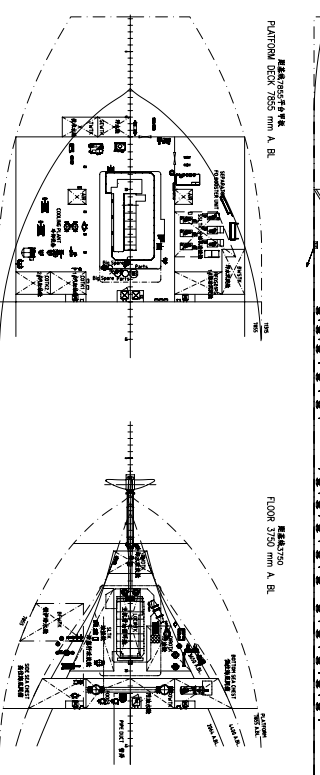
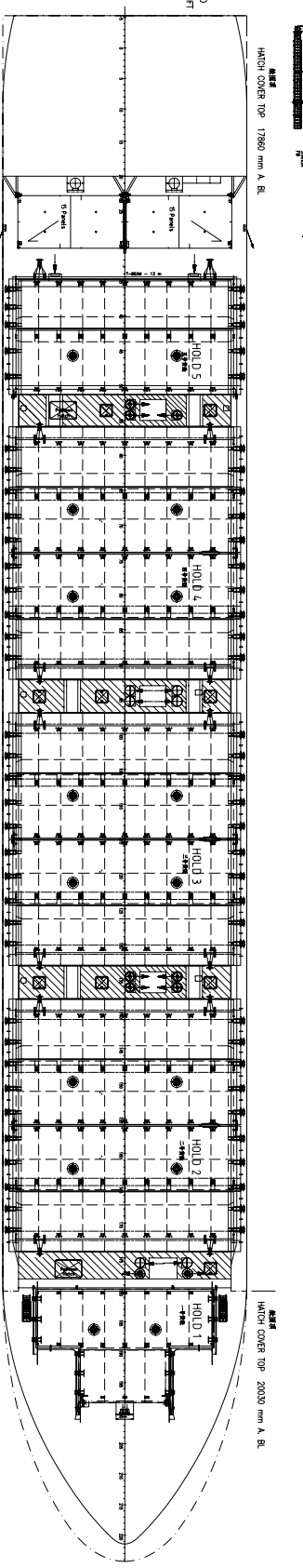
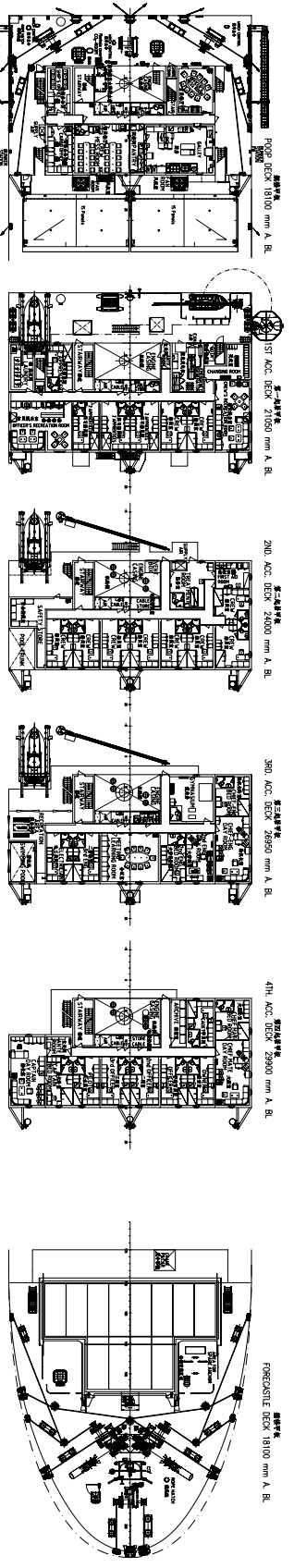
<b>Tweendeckpanels</b>	Panel Weight	23 mt unitweight
	Panel Volume	63 cbm per unit
<b>Tween Deck Racks</b> <i>in 2 x 8.5' tiers height</i>	Rack Weight	3,7 mts unitweight
	Rack Volume	187 cbm per hold with 10 racks installed
<b>Tween Deck Racks</b> <i>in 3 x 8.5' tiers height</i>	Rack Weight	3,7 mts unitweight
	Rack Volume	269 cbm per hold with 15 racks installed

Navigation/ Fitted with all modern nautical aids /satellite navigation  
**Communication:** weather-chart recorder / Inmarsat system / GMDSS / SAT F

*All details and figures are about, except fuel specifications, and are believed to be correct.*



FORECASTLE DECK 18100 mm A.B.



船名: 04HC-0200-0

船主: 04HC-0200-0

船级社: BV

船型: 散货船

船东: 中远海运

船名: 04HC-0200-0

船主: 04HC-0200-0

船级社: BV

船型: 散货船

船东: 中远海运

船名: 04HC-0200-0

船主: 04HC-0200-0

船级社: BV

船型: 散货船

船东: 中远海运

船名: 04HC-0200-0

船主: 04HC-0200-0

船级社: BV

船型: 散货船

船东: 中远海运

船名: 04HC-0200-0

船主: 04HC-0200-0

船级社: BV

船型: 散货船

船东: 中远海运

船名: 04HC-0200-0

船主: 04HC-0200-0

船级社: BV

船型: 散货船

船东: 中远海运

船名: 04HC-0200-0

船主: 04HC-0200-0

船级社: BV

船型: 散货船

船东: 中远海运

船名: 04HC-0200-0

船主: 04HC-0200-0

船级社: BV

船型: 散货船

船东: 中远海运

船名: 04HC-0200-0

船主: 04HC-0200-0

船级社: BV

船型: 散货船

船东: 中远海运

船名: 04HC-0200-0

船主: 04HC-0200-0

船级社: BV

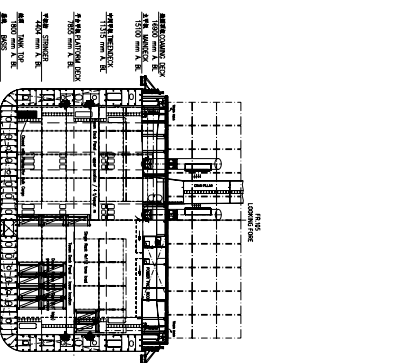
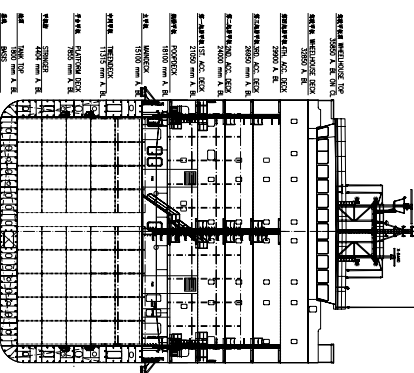
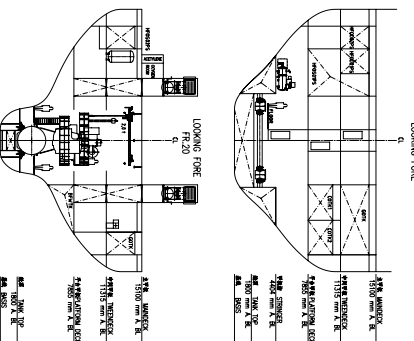
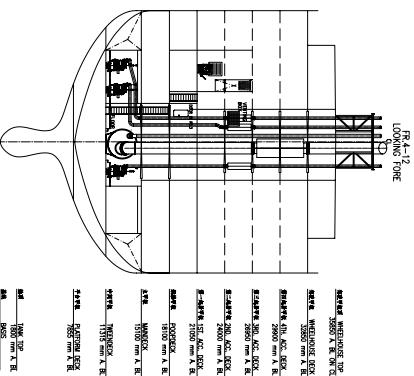
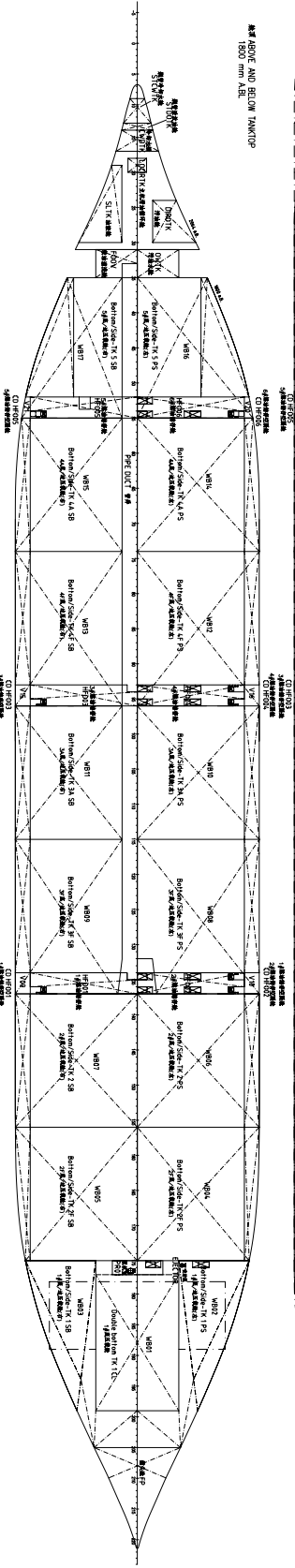
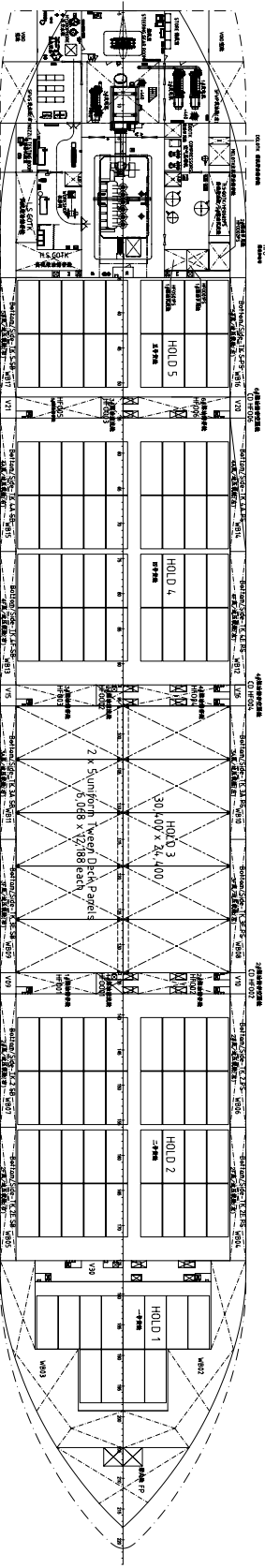
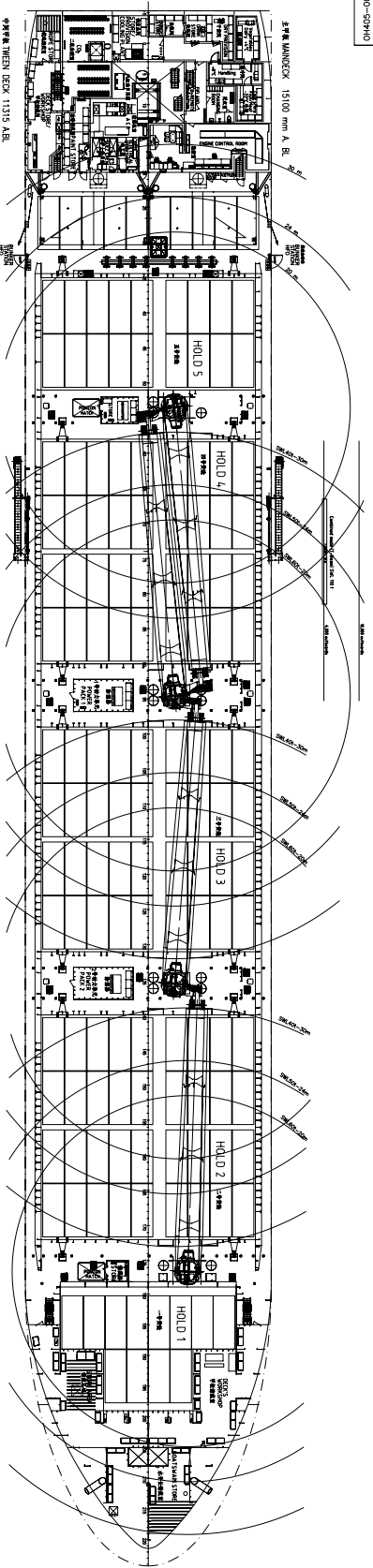
船型: 散货船

船东: 中远海运

Not drawing and for information contained in the information on the cover of this drawing shall be copied or reproduced in any form without the written permission.

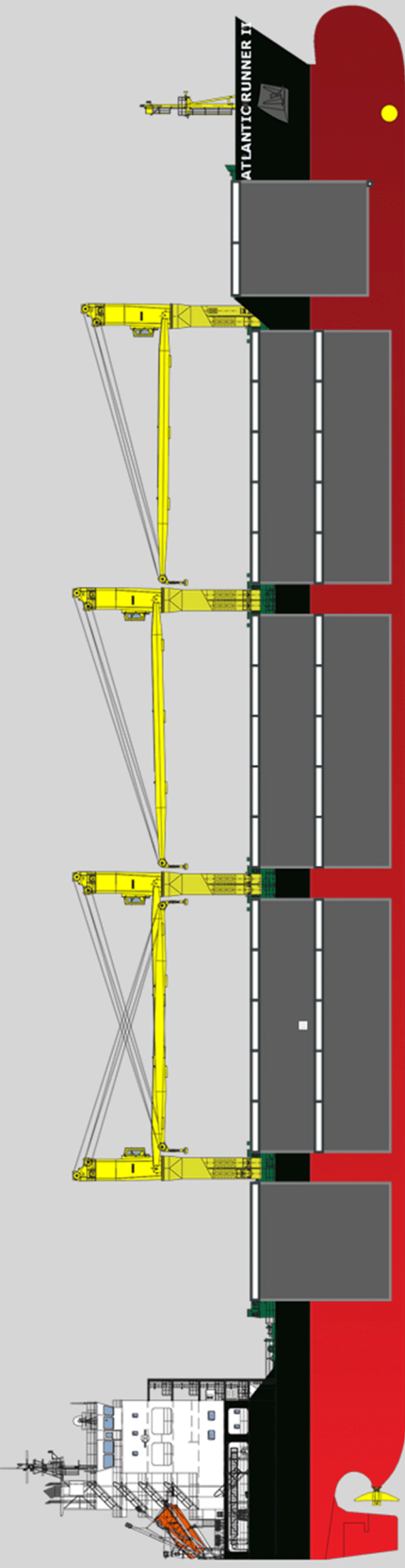
本图及封面信息均仅供参考, 未经许可, 不得复制或在本图基础上进行修改, 否则将承担法律责任。

ARCH: 07PH

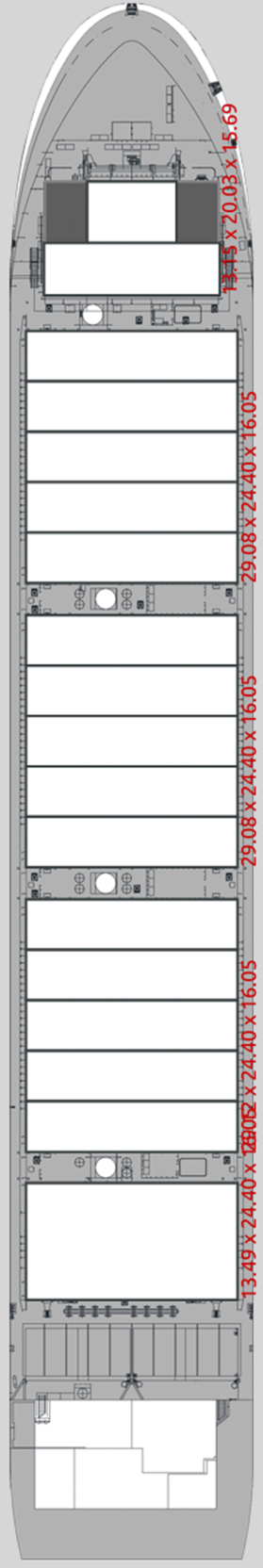


The drawing and the information contained in this drawing shall be used for the construction of the ship and shall not be copied or handed over to third parties without the written permission.

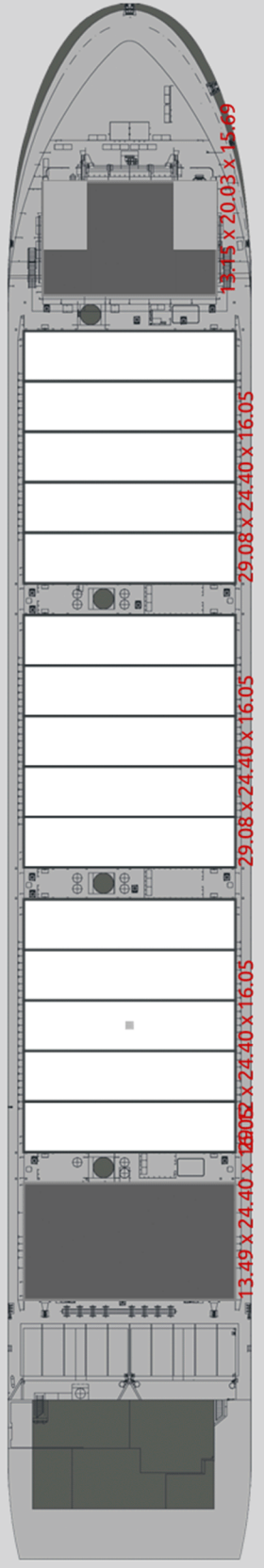
DATE	DESCRIPTION	BY
2024.05.15	ISSUED	DESIGN
2024.05.15	REVISED	DESIGN
2024.05.15	REVISED	DESIGN
2024.05.15	REVISED	DESIGN
2024.05.15	REVISED	DESIGN



Main deck



Tween deck



Tank Top

