



## NAME: MV "ATLANTIC RUNNER II"

**Type:** Multi-Purpose Dry Cargo Ship, Equipped for Carriage of Containers,  
**Time Charter Owners :** 2K Shipping and Trading JSC - Istanbul  
**Technical Operator:** MARLOW SHIP MANAGEMENT DEUTSCHLAND GMBH & CO. KG  
**Hull & Machinery:** Dohle Assekuranzkontor; P&I: Steamship Mutual

**Flag:** Marshall Islands  
**Port of Registry:** Majuro  
**IMO- No.:** 9509619  
**Call Sign:** V7A5739

**CLASS:** DNV  
**Yard:** Zhejiang Ouhua Shipyard China  
**Built:** 2010

### VESSEL DIMENSIONS:

|                                |          |
|--------------------------------|----------|
| LOA                            | 179.50 m |
| LBP                            | 169.00 m |
| Beam                           | 28.00 m  |
| Depth                          | 15.10 m  |
| Draft summer, <i>freeboard</i> | 10.80 m  |
| Draft design                   | 10.00 m  |

### DEADWEIGHT:

|          |                           |
|----------|---------------------------|
| Summer   | 33271 mts on draft 10.8 m |
| Winter   | 32255 mts on draft 10.6 m |
| Tropical | 34291 mts on draft 11.1 m |
| Fresh    | 34364 mts on draft 11.1 m |

|                |                             |
|----------------|-----------------------------|
| Tonnage Int.   | 22.863 GT / 10.602 NT       |
| Tonnage Suez   | 23.356,82 GT / 21.969,70 NT |
| Tonnage Panama | 19.050,00 NT                |
| Lightship      | 10285,3 t                   |

|                     |             |
|---------------------|-------------|
| Container capacity: | 20 FT/40 FT |
| Deck:               | 484/218     |
| Hold:               | 674/327     |
| Total:              | 1158/545    |

Vessel's container intake is always subject to vessel's stability / trim / deadweight / permissible stack weights / Lashing forces and subject to regulations of visibility.

## CARGO VOLUME:

39,042 cbm (without Tween Decks)  
36,522 cbm (with Tween Decks)

## MAIN ENGINE:

Licencor MAN B&W, Copenhagen  
Licensee/Maker STX, Korea  
Type 1 x 6S50 MC-C7  
Output MCR 8.800 KW

## DIESEL GENERATORS:

Maker MAN B&W  
Type 2 x 6L 16/24  
Output 1 x 502 kWel at 1.000 rpm 50 hz  
Type 1 x 5L 16/24  
Output 1 x 418 kWel at 1.000 rpm 50 hz

## CRANES:

Maker MacGregor-Hdgglunds  
Number + Type 4 electro hydraulic  
*single deck crane* SWL 60 mts  
Outreach SWL 60mts - 20 mtrs  
Outreach SWL 50mts - 24 mtrs  
Outreach SWL 40mts - 30 mtrs

Combinable above hatch 2/3/4 to 110 mts by means of a traverse beam location center, with offset to port side. In case cranes are working constantly for 24 hours owners have the option to carry out maintenance work thereafter.

## CARGO HOLDS:

| Hold           | Cubic w/o TWD | Cubic with TWD<br>in lower position | Hatchsize ( L X B )       |
|----------------|---------------|-------------------------------------|---------------------------|
| 1              | 3.294         | 3.242                               | 12.6 m X 20.04 m / 10.2 m |
| 2              | 10.765        | 9.733                               | 25.6 m X 24.4 m           |
| 3              | 10.765        | 9.733                               | 25.6 m X 24.4 m           |
| 4              | 10.765        | 9.733                               | 25.6 m X 24.4 m           |
| 5              | 4.248         | 4.155                               | 12.8 m X 24.4 m           |
| Total : 39.837 |               | 36.609                              |                           |

## TANKTOP SIZES:

|        | Tweendeck in holds 2/3/4         | Bottom Sizes ( L X B )    |
|--------|----------------------------------|---------------------------|
| Hold 1 | 227 sqm                          | 7.8/6.9 m X 20.1 m/10.2 m |
| Hold 2 | 742 sqm                          | 30.4 m X 24.4 m           |
| Hold 3 | 742 sqm                          | 30.4 m X 24.4 m           |
| Hold 4 | 742 sqm                          | 30.4 m X 24.4 m           |
| Hold 5 | 197 sqm + 135 sqm (monkey rocks) | 13.6 m X 14.5 m (24.4 m)  |

Total : 2,650 sqm + 135 sqm ( MR ) / 2,785 sqm tank

Clear height in hold : 14,85 meters

**Tanktop strength** 20 mts/sqm  
Except on monkey rocks in hold 5  
Where it is 12 mts/sqm and 4 mts/sqm on racks  
when they are stored in hold 5  
Containers stack weight: 20'/40' - 150mts/150mts.

**Hatch covers** Hydraulic folding type hatchcovers covers  
always one panel folding upright forward and  
aft Hatch Cover Sizes (L x B)

|          |       |     |                         |
|----------|-------|-----|-------------------------|
| Hold 1   | 206   | sqm | 6.9/6.1 m x 20.5/10.6 m |
| Hold 2-4 | 2.067 | sqm | 29.1 m x 26.5 m (each)  |
| Hold 5   | 352   | sqm | 13.3 m x 26.5 m         |
| Total:   | 5.232 | sqm |                         |

**Fixed container fittings** 60 mts per 20ft stack on hatches 2-5 /  
**flush type container** 28 mts on hatch 1  
**stack weights:** 90 mts per 40ft stack on hatches 2-5 /  
56 mts on hatch 1  
70 mts per 20ft stack on deck in front of wheelhouse

**Hatch cover strength:** 4 mts/sqm

## TWEENDECK:

**Tweendeck container  
stack weights:**

20'/40' - 30mts/30mts  
20'/40' - 30mts/30mts

**Tweendeck strength**

Tweendeck in holds 2/3/4

**Tweendeck height**

4 mts/sqm

**Tween deck Principle**

2 times , 2 layers or 3 layers of 8'6' containers

TD panels outside and aft resting on titable foundations  
at side wall TD panels inside (at cl) resting on movable  
supporting racks. One, two, three or all five TD panels  
continuously laid out from aft to fwd.

a. m. TD panels laid out one or both sides

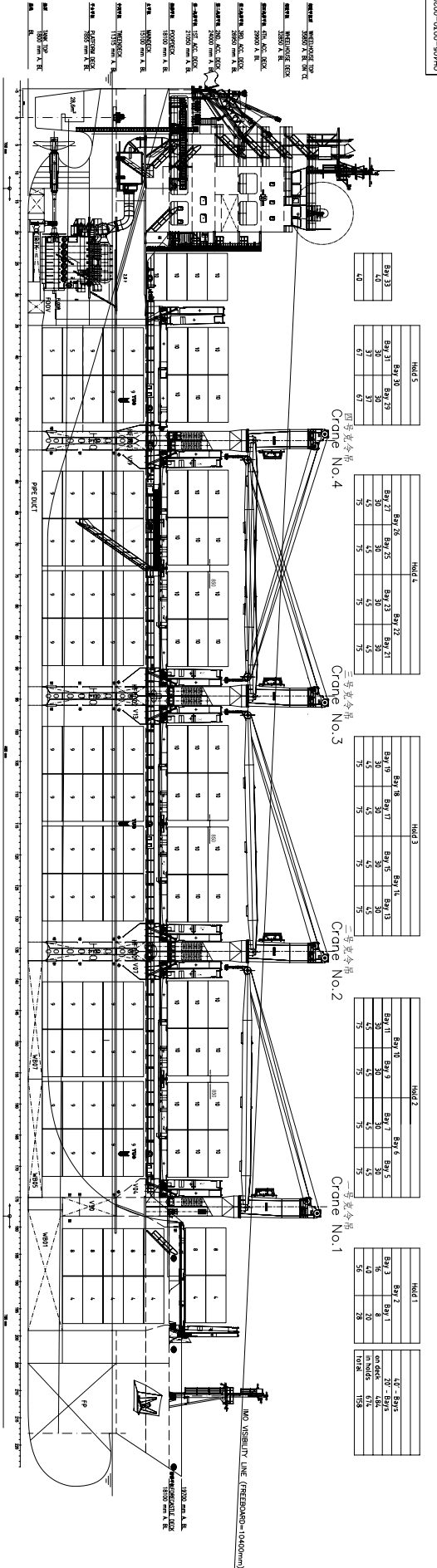
TD supporting racks to be free of horizontal lashing  
and cargo forces. Holds equipped with lashing eyes  
to assist in withdrawing cargo from racks

|  |              |  |
|--|--------------|--|
| <b>Tweendeckpanels</b>                                     | Panel Weight | 23 mt unitweight                         |
|  | Panel Volume | 63 cbm per unit                          |
| <b>Tween Deck Racks</b><br><i>in 2 x 8.5' tiers height</i> | Rack Weight  | 3,7 mts unitweight                       |
|  | Rack Volume  | 187 cbm per hold with 10 racks installed |
| <b>Tween Deck Racks</b><br><i>in 3 x 8.5' tiers height</i> | Rack Weight  | 3,7 mts unitweight                       |
|  | Rack Volume  | 269 cbm per hold with 15 racks installed |

Navigation/ Fitted with all modern nautical aids /satellite navigation

**Communication:** weather-chart recorder / Inmarsat system / GMDSS / SAT F

*All details and figures are about, except fuel specifications, and are believed to be correct.*



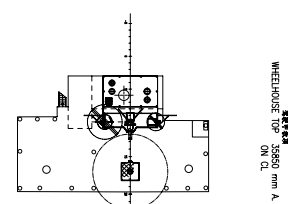
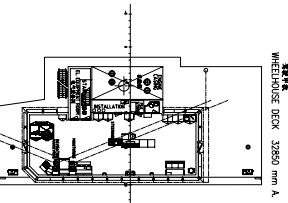
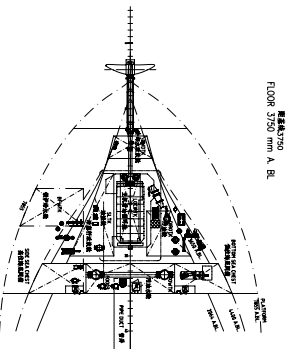
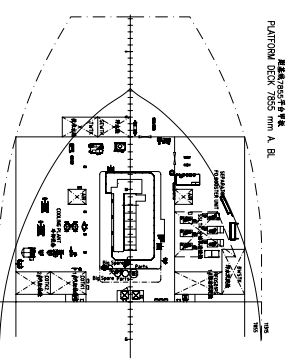
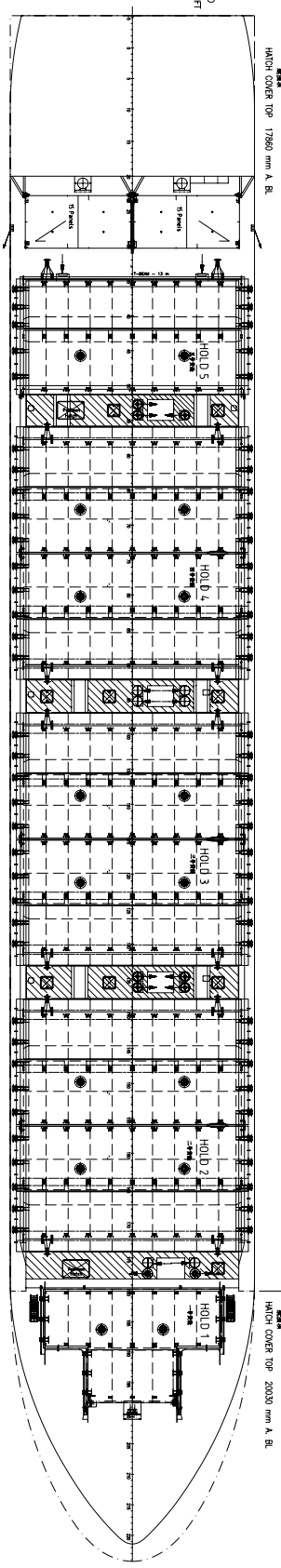
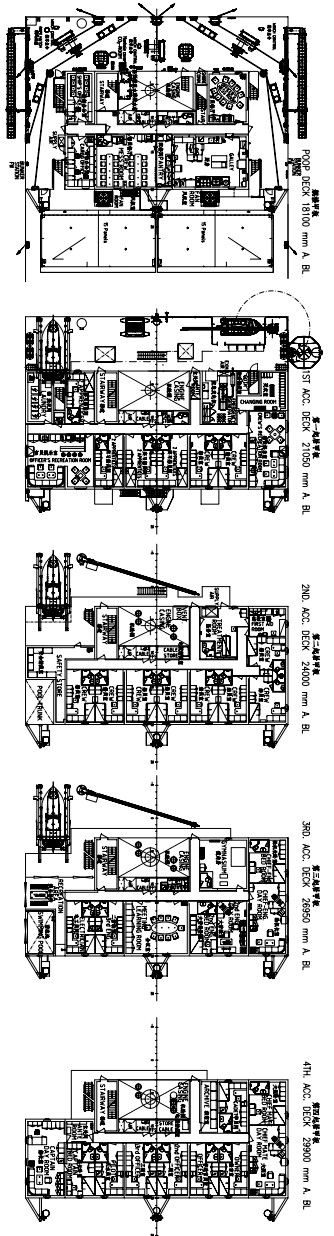
| HOLD 5 |     |
|--------|-----|
| Bay 23 | 4.0 |
| Bay 21 | 4.5 |
| Bay 29 | 4.5 |
| Bay 27 | 4.5 |
| Bay 25 | 4.5 |
| Bay 23 | 4.5 |
| Bay 21 | 4.5 |
| Bay 19 | 4.5 |
| Bay 17 | 4.5 |
| Bay 15 | 4.5 |
| Bay 13 | 4.5 |
| Bay 11 | 4.5 |
| Bay 9  | 4.5 |
| Bay 7  | 4.5 |
| Bay 5  | 4.5 |
| Bay 3  | 4.5 |
| Bay 1  | 4.5 |

| HOLD 4 |     |
|--------|-----|
| Bay 26 | 4.5 |
| Bay 24 | 4.5 |
| Bay 22 | 4.5 |
| Bay 20 | 4.5 |
| Bay 18 | 4.5 |
| Bay 16 | 4.5 |
| Bay 14 | 4.5 |
| Bay 12 | 4.5 |
| Bay 10 | 4.5 |
| Bay 8  | 4.5 |
| Bay 6  | 4.5 |
| Bay 4  | 4.5 |
| Bay 2  | 4.5 |

| HOLD 3 |     |
|--------|-----|
| Bay 28 | 4.5 |
| Bay 26 | 4.5 |
| Bay 24 | 4.5 |
| Bay 22 | 4.5 |
| Bay 20 | 4.5 |
| Bay 18 | 4.5 |
| Bay 16 | 4.5 |
| Bay 14 | 4.5 |
| Bay 12 | 4.5 |
| Bay 10 | 4.5 |
| Bay 8  | 4.5 |
| Bay 6  | 4.5 |
| Bay 4  | 4.5 |
| Bay 2  | 4.5 |

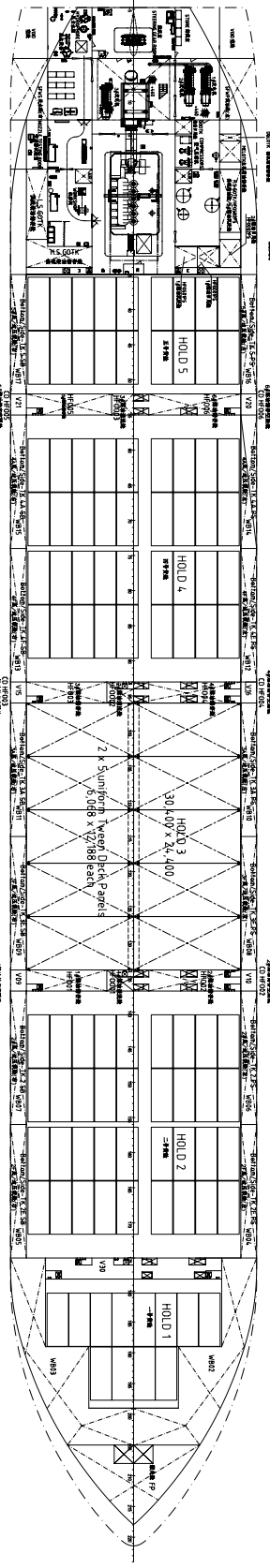
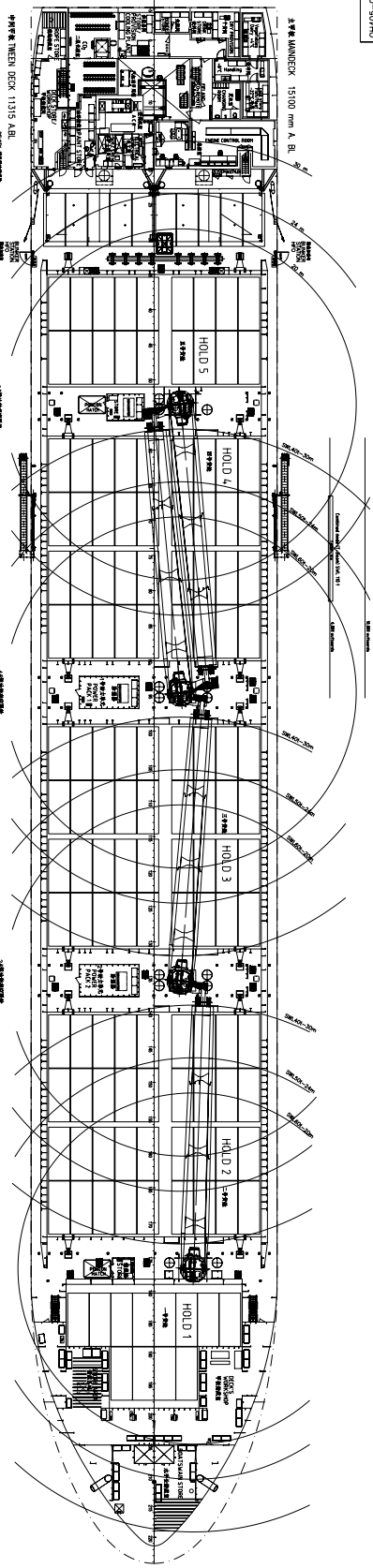
| HOLD 2 |     |
|--------|-----|
| Bay 30 | 4.5 |
| Bay 28 | 4.5 |
| Bay 26 | 4.5 |
| Bay 24 | 4.5 |
| Bay 22 | 4.5 |
| Bay 20 | 4.5 |
| Bay 18 | 4.5 |
| Bay 16 | 4.5 |
| Bay 14 | 4.5 |
| Bay 12 | 4.5 |
| Bay 10 | 4.5 |
| Bay 8  | 4.5 |
| Bay 6  | 4.5 |
| Bay 4  | 4.5 |
| Bay 2  | 4.5 |

| HOLD 1 |     |
|--------|-----|
| Bay 32 | 4.0 |
| Bay 30 | 4.0 |
| Bay 28 | 4.0 |
| Bay 26 | 4.0 |
| Bay 24 | 4.0 |
| Bay 22 | 4.0 |
| Bay 20 | 4.0 |
| Bay 18 | 4.0 |
| Bay 16 | 4.0 |
| Bay 14 | 4.0 |
| Bay 12 | 4.0 |
| Bay 10 | 4.0 |
| Bay 8  | 4.0 |
| Bay 6  | 4.0 |
| Bay 4  | 4.0 |
| Bay 2  | 4.0 |

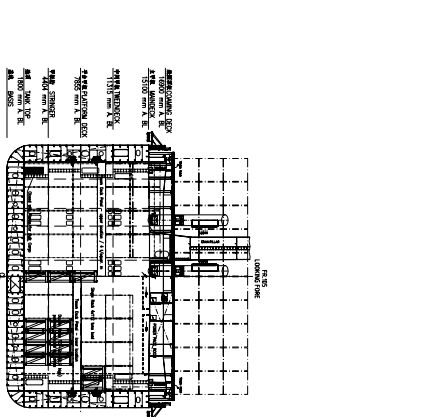
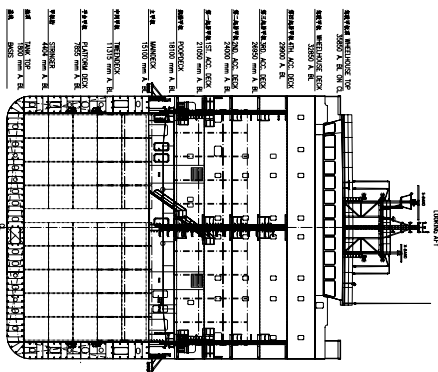
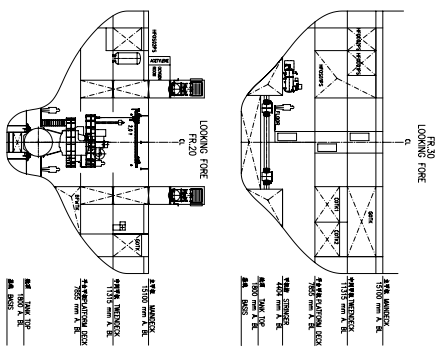
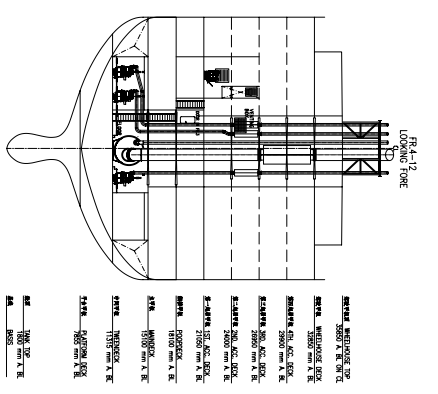
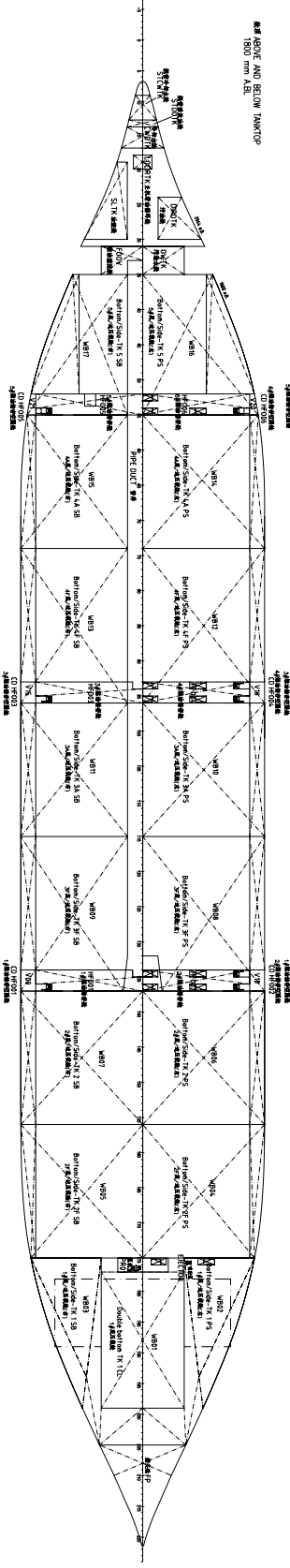


船名: 114054  
 船型: 散貨船  
 船主: 中國船舶工業有限公司  
 船東: 中國船舶工業有限公司  
 船務經理: 中國船舶工業有限公司  
 船務地址: 中國船舶工業有限公司  
 船務電話: 010-51114054  
 船務傳真: 010-51114054  
 船務郵箱: 114054@csic.com.cn  
 船務網址: www.csic.com.cn

|      |                    |      |                 |
|------|--------------------|------|-----------------|
| 船名   | 114054             | 船型   | 散貨船             |
| 船主   | 中國船舶工業有限公司         | 船東   | 中國船舶工業有限公司      |
| 船務經理 | 中國船舶工業有限公司         | 船務地址 | 中國船舶工業有限公司      |
| 船務電話 | 010-51114054       | 船務傳真 | 010-51114054    |
| 船務郵箱 | 114054@csic.com.cn | 船務網址 | www.csic.com.cn |



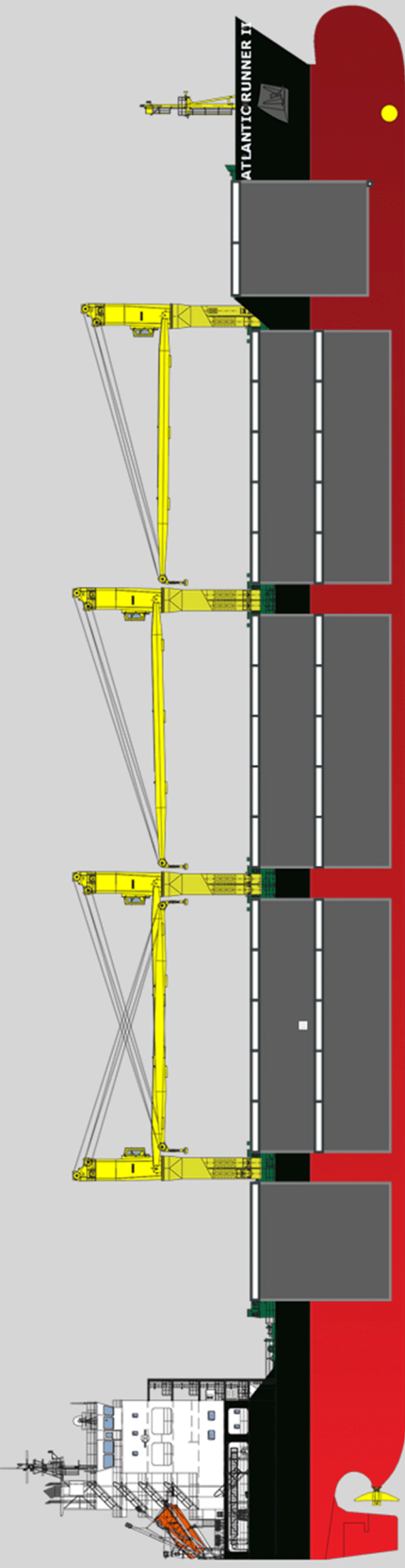
SECTION ABOVE AND BELOW INWOP  
1800 mm A.B.



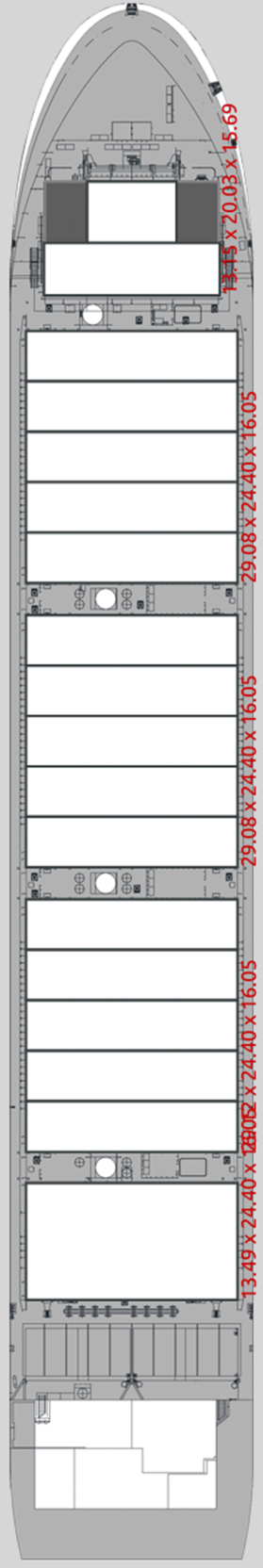
This drawing and the information contained therein are the property of the Shipyard and shall not be copied or reproduced in any form without the written permission of the Shipyard.

|            |             |      |         |
|------------|-------------|------|---------|
| DATE       | DESCRIPTION | BY   | CHECKED |
| 2014.08.20 | REVISED     | WANG | WANG    |
| 2014.08.20 | ISSUED      | WANG | WANG    |

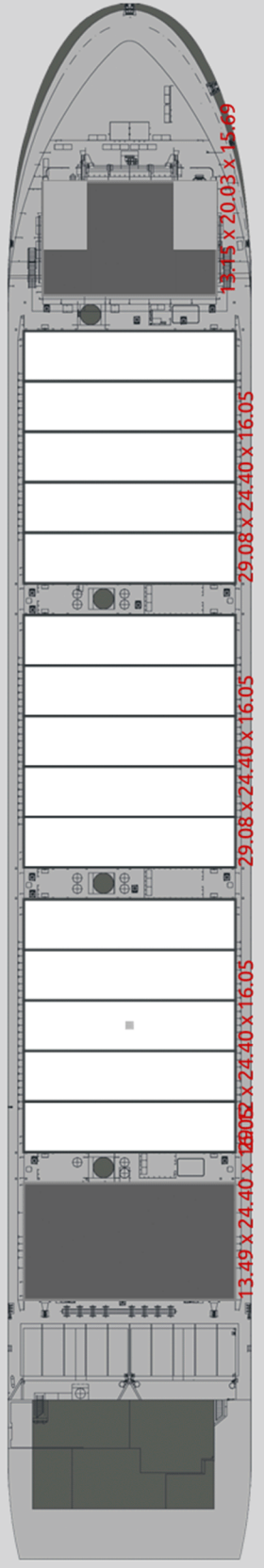
SHIPYARD GENERAL ARRANGEMENT  
 船舶總佈圖  
 圖號: 04H05-0000-0000-0  
 比例: 1:500  
 日期: 2014.08.20  
 圖名: SUNFLOWER TWEEN DECK 11315 A.B.



Main deck



Tween deck



Tank Top

